



Depression and Bipolar Support Alliance of San Diego

DBSA San Diego presents ...



Marla Kingkade

Behavioral Health Emergency Response Plan

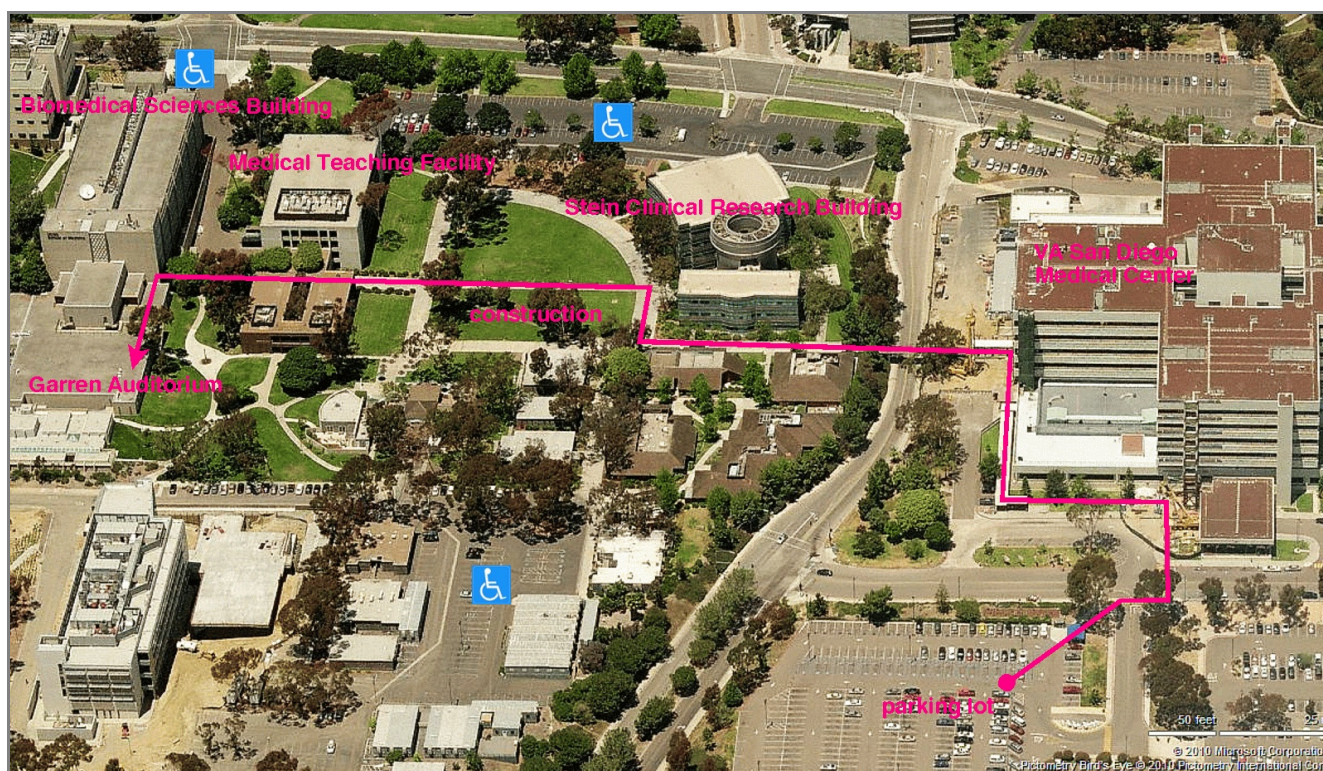
Marla Kingkade, Law Enforcement Liaison and Community Outreach for PERT, will provide an overview of the ERP (Emergency Response Plan) form and explain the purpose of the ERP form. A DVD will also be shown.

**when Monday, 01 August 2011
6:00pm – 8:00pm**

**where Garren Auditorium
Biomedical Sciences Building
Medical School Campus
University of California, San Diego
La Jolla, California**

Marla Kingkade has been with PERT (the Psychiatric Emergency Response Team) for several years and currently coordinates the law enforcement portion of the PERT program. PERT, in partnership with San Diego County Health and Human Services, San Diego County Law Enforcement, National Alliance on Mental Illness (NAMI San Diego) and the Community Research Foundation, contributes to the well-being of individuals with mental illness by actively and compassionately assisting individuals in crisis who come to the attention of law enforcement to access appropriate services and to optimize outcomes through on-scene assessments and referrals.

There is *free parking* in the VA San Diego Medical Center parking lot. Garren Auditorium is a short walk over the footbridge. Follow the signs for about one block. *See the map on the reverse side for detailed directions.* For information on parking with "Disabled Person" placards or license plates, visit the UCSD page <http://blink.ucsd.edu/facilities/transportation/permits/disabled.html> or see the map overleaf.



Walking Directions to Garren Auditorium

Follow the **DBSA San Diego** signs with the **blue** arrows along the way.

1. Start in the parking lot and walk to the bus stop in front of the VA San Diego Medical Center (usually called the VA Hospital in La Jolla).
2. Walk **west** to the covered outdoor corridor, turn **right** and walk down that corridor (along the western edge of the hospital) until you turn **left** when you get to the footbridge crossing Villa La Jolla Drive. Walk over that footbridge.
3. Continue walking past the Stein Clinical Research Building (on your **right**).
4. To avoid the construction area, follow the sidewalk **right** and then **left** where the fence ends, continuing toward the Medical Teaching Facility building.
5. Walk under the overhead walkway connecting the two parts of Medical Teaching Facility.
6. Continue walking until you reach the Biomedical Sciences Building.
7. Enter the large glass sliding doors and turn immediately **left** down a corridor, where there is a sign saying Garren Auditorium is in Room 1105.
8. Walk down the corridor, turning **right**, then **left**.
9. Garren Auditorium is down the first hallway to your **left**, Room 1105. You can enter at the bottom, where the lecturer is, or continue until you see a staircase going up on your **right**. This will take you to the top (back) of the auditorium.

Please note: The sliding glass doors to the Biomedical Sciences Building lock from the outside at 7:00pm, so please be sure to arrive before then.